



14-DAY CANADA TRIP

COAST GRAVITY PARK – WHISTLER – KAMLOOPS –
SUN PEAKS - SILVERSTAR

Dates: 26 JULY – 8 AUGUST 2019

Game on! Two weeks of foot out flat out BC Canada madness...

Join the Blue Dirt crew for this wild ride! Strictly limited to 12 people maximum.

Itinerary Summary:

- 1 day arriving/build bikes/rest/happy hour brought to you by Blue Dirt
- 1 day riding at Coast Gravity park
- 4 days riding at Whistler Bike Park
- 1 day riding Kamloops
- 2.5 days riding Sun Peaks Bike Park
- 3 days riding SilverStar Bike Park
- 1 Day internal flight Kelowna – Vancouver to board flight to AUS

[Detailed itinerary at end of document.](#)

This year is set to be bigger and better than ever before. Our trip finishes just before Crankworx, Whistler allowing riders to stay on longer if they wish.

We have packaged together everything you need for this trip including:

- Return flights from Australia (Melb., Syd. Bris.) to Vancouver, Canada
- 1 internal Canada flight (Kelowna – Vancouver)
- 13 nights shared accommodation
- All ground transfers
- All chairlift/shuttle tickets
- Ferry tickets
- All breakfasts
- 3 Group dinners
- Blue Dirt T-shirt and snapback cap for style
- 1 x free Blue Dirt shuttle season pass (this season or next, you pick) RRP:\$650

This trip is ridiculous value! You're free to ride all of the bike parks at your own pace or ride with the crew if you like.



Contact us: ride@bluedirt.com.au ph: +614 09161 903 www.bluedirt.com.au

Whistler

Link to Whistler Bike Park: <http://bike.whistlerblackcomb.com>

What more can be said about this biking mecca. Trails for all skill and bike types. You will not be disappointed. We're there just before Crankworx ensuring the trails are in prime condition and there are minimal lift lines.

Your Whistler Mountain Bike Park lift ticket provides over 1,500m of lift-serviced gravity fed, adrenaline fuelled descending trails.

The package includes 4 days of lift ticketed riding.

Yes there is lots of other things to do at Whistler – check their website <http://bike.whistlerblackcomb.com>

Coast Gravity Park

Link to Coast Gravity Park: <https://www.coastgravitypark.ca>

Since bursting on the scene a few years ago Coast Gravity Park allows riders of all levels to experience trails built and designed by world-renowned builders and riders – the Coastal Crew. <http://www.thecoastalcrew.com>

Built on private land the crew have established trails and a reputation famous the world over. Trails range from Green to Double Black Diamond Pro Line with gaps requiring NASA clearance.

Check the park out at <https://www.coastgravitypark.ca>

Kamloops

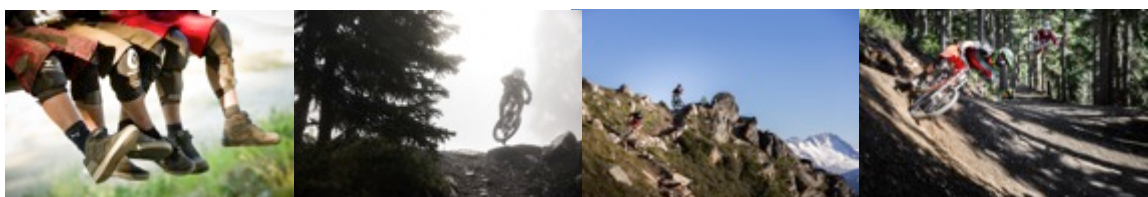
Link to Kamloops Bike Ranch: <http://www.tourismkamloops.com/kamloops-bike-ranch>

Often referred to as the birthplace of freeride MTB.

Home to famous riders such as Brett Tippie, Matt Hunter, Graham Agassiz.

Expect to see shear cliffs, wide open grasslands, desert and bushland.

We will spend a few hours of the day shuttling the famous Kamloops Bike Ranch, which offers a range of downhill trails varying in difficulty as well as a jumps park and XC course if into that kind of thing. Once we have had our fix of the bike ranch we are heading to Harper Mountain for more shuttles on some awesome hand cut forest trails.



Contact us: ride@bluedirt.com.au ph: +614 09161 903 www.bluedirt.com.au

Sun Peaks Bike Park

Link to Sun Peaks Bike Park - <http://www.sunpeaksresort.com/summer/bike-park/>

2,000 feet of lift accessed vertical, extended to nearly 2,500 feet with the addition of a new alpine route.

40 distinct trails range from flowing machine-made to fully pinned DH

videos: <http://www.sunpeaksresort.com/summer/bike-park/video-share>

SilverStar Bike Park

Link to SilverStar Bike Park - <http://www.skisilverstar.com/summer/activities-events/mountain/downhill-biking>

More than 18 top-to-bottom trails and 1600 vertical feet of riding

50+ km of downhill trails, ranging from green (easy) to double black (expert only)

Degree of Difficulty: 15% beginner, 40% intermediate, 45% Advanced

Video: <https://vimeo.com/131832628>

Accommodation

All accommodation is twin share unless single occupancy is requested and additional amount is paid. All accommodation is with bike friendly operators who have secure storage for all bikes and equipment.

Eating

There is a huge range of options for all budget types.

All breakfasts are included as well as 3 group dinners throughout the trip.

We think its better for everyone to do their own thing for lunches as some people will forget about eating all together in order to get more laps in where as others will get lost in a beer and burger.



Logistics

We have taken out all the hassle for you, you don't even have to organise your flights as we include them in our package. All you do is turn up each day!

The ride package includes the following transfers:

- Return flight from either Melb. – Syd. – Brisb. To Vancouver
- Road transport from Vancouver to Whistler via Coast Gravity Park (Sunshine Coast) –
- Return ferry rides Vancouver Ferries – Horseshoe Bay to Langdale.
- Road transport from Whistler to Kamloops.
- Road transport from Kamloops Sun Peaks.
- Road transport from Sun Peaks to SilverStar.
- Road transport from SilverStar to Kelowna airport.
- Internal flight from Kelowna (40 minute transfer from Silver Star included) to Vancouver (bags checked all the way through to AUS)
- Return flight from Vancouver to AUS

Itinerary:

26 July	Arrive in Vancouver Airport pick up and transfer to accommodation Eat, sleep, build bikes and have a look around Vancouver
27 July	Early start to get to the Ferry to Coast Gravity Park Ride Coast Gravity Park all day Shuttle pass included Return ferry and then road transfer to Whistler
28 July – 1 August	Ride Whistler Bike Park 4 day lift pass included
1 August	Road transport from Whistler to Kamloops Explore Kamloops
2 August	Ride Kamloops Bike Ranch Includes shuttles all day Road transfer to Sun Peaks
3 – 4 August	Ride Sun Peaks Bike Park for 2 days Lift passes included
5 – 7 August	Road transfer to Silver Star Bike Park 2.5 days riding the bike park Lift passes included Travel to Kelowna for the last night
8 August	Road transfer to Kelowna airport Internal flight from Kelowna to Vancouver Luggage checked straight through to AUS Connecting flight from Vancouver to AUS



Contact us: ride@bluedirt.com.au ph: +614 09161 903 www.bluedirt.com.au

Travel insurance:

All riders MUST have their own travel insurance to come on this trip. We are able to offer you a discounted deal through our travel agent, therefore please ask if you would like to find out more details. Alternatively you are free to arrange your own insurances elsewhere.

Price:

Price:

Early bird deposit only: AUD\$500.00 + min. of \$1,500 paid before 31 DEC 2018 (full price: \$6,750.00)

Early bird booking paid in full: AUD\$6,400.00

Bookings after 20 AUG 2018: AUD\$6,750.00 (min. of \$2,000 deposit)

Includes everything listed above.

Includes:

- Return flights from Australia (Melb., Syd. Bris.) to Vancouver, Canada
- 1 internal Canada flight (Kelowna – Vancouver)
- 13 nights shared accommodation (2 per room)
- All ground transfers
- All chairlift/shuttle tickets
- Ferry tickets
- All breakfasts
- 3 Group dinners
- Luggage allowance for flights: 23kg per person (2 bag max)
- Blue Dirt T-shirt and snapback cap for style
- Includes 1 free Blue Dirt shuttle season pass (either 2018 or 2019 season your choice) valued at \$650

Excludes:

- Lunches, dinners excluding 3 group dinners
- Any chairlift/gondolas outside of bike parks ie. Top of the world at Whistler
- Any excess luggage or over weight charges.
- Travel insurance – All riders MUST have travel insurance

Payment plan available:

- Interest free payment plan
- Pay off the trip in instalments
- At least 50% must be paid by 30 March 2019
- Full amount must be paid by 30 June 2019
- All payments are none refundable upon cancellation unless the rider can find a replacement to come on the trip in their place and cover all costs. In this case, refunds will be given where possible.



Terms and conditions:

Terms & Conditions:

- Early bird discount tickets are only available 20 JULY-20 AUG 2018 & require a non refundable payment of either \$500.00 for deposit only or \$6,400.00 for payment in full.
- A\$2000.00 deposit is required to confirm any standard booking (does not apply to early bird tickets).
- Payment plans available at \$200.00 minimum instalments until amount fully paid.
- Bookings close 30 June 2018
- All payments are none refundable upon cancellation unless the rider can find a replacement to come on the trip in their place and cover all costs. In this case, refunds will be given where possible.
- Prices include Canadian taxes.
- Riders ride at their own risk.
- Riders are responsible for all of their own baggage, bikes and gear on this trip
- Riders are issued a 2 x 23kg baggage allowance plus 1 x small carry on. If a riders luggage incurs extra charges because of being oversize or weight, this will not be covered by Blue Dirt.
- Riders are responsible to ensure that their luggage fits within the size and weight limits of the airline which Blue Dirt has booked their flights with.
- If riders miss their flight, they must pay any additional fees and catch up to the group with their own money.
- The package price only includes what is listed in the 'includes' section of this document.
- Riders to obtain their own travel insurance or request a travel insurance deal with Blue Dirt.
- Riders to obtain their own Canadian VISA.
- Bikes, helmets, accessories, etc. are not included in the package price.
- All riders are subject to the respective Bike Park terms and conditions. Please visit each bike parks websites for relevant information.
- Riders are required to complete the respective Ticket Waiver for each Bike Park.
- If a situation arises that affects the ability to safely deliver a trip eg. natural disaster, political unrest or other similar event and this potentially affects our ability to safely deliver a trip we reserve the right to cancel this trip and provide you a full credit to use on any Blue Dirt trip in the 12 months after this trips scheduled departure.
- Comprehensive Medical Insurance is highly recommended. It is a rider's responsibility to source his or her own insurance. Medical and evacuation expenses will be the responsibility of the participant. This can be expensive based on the location and wilderness in which you will be riding. Trip participants are responsible for purchasing medical insurance. We also recommend insurance cover cancellations, injury, delays, baggage and personal effects.

